



TELESCOPIC HANDLER

Sunward Intelligent Equipment Co., Ltd.

✉ international@sunward.cc

📍 Sunward Industrial Park, No. 1335 Liangtang Road (E), Xingsha, Changsha, Hunan, China

🌐 <http://global.sunward.com.cn>

Please read the operation and maintenance manual carefully first for proper use of the equipment. Sunward will make continual improvement, however, it may not be possible for us to inform you of all improvements to the products. This illustration is only used for reference and will be finally interpreted by Sunward.
Internal Use Only

SUNWARD

GROUP PROFILE

Sunward was founded by Professor He Qinghua of Central South University in 1999. Started from a revolutionary innovative product - hydraulic static pile driver, now Sunward has developed into a listed company with Sunward Intelligent Equipment Co., Ltd. as the core and a Changsha based international business group with influences both at home and abroad. With the mission and vision of “developing into a world’s value creator in the equipment manufacturing sector”, Sunward has made comprehensive developments in three sectors, namely construction equipment, special equipment and aviation equipment. Sunward now has become a leading enterprise of underground construction equipment in China and listed among the Top 50 Global Construction Machinery Manufacturers, Top 20 Global Excavator Enterprises, and Top 3 Global Regional Aircraft Leasing Enterprises.

Sunward has successfully developed more than 200 models in a dozen of sectors such as underground construction equipment, whole series excavator, modern rock drilling equipment, special equipment, mining equipment, lifting machinery, hydraulic parts and components, general aviation equipment, etc. and has high-end equipment products with independent intellectual property right and core competitiveness. Sunward’s products have been exported to over 100 countries and regions in batches, and the Sunward trademark has been registered in over 100 countries in the world. Sunward owns more than 1,000 patented technologies, engages in 23 state-level programs, such as the 863 Program, the National Science and Technology Support Program, the Grassroots-level Development Program, etc., and has received dozens of rewards such as the Second Prize of the National Science and Technology Progress Award, etc. It has been rated or approved as a National Technological Innovation Demonstration Enterprise, a National Innovative Enterprise and other honorable titles or innovation platforms. On September 17, 2020, President Xi Jinping inspected Sunward, and highly praised Sunward’s entrepreneurship of growing out of nothing and expanding from a small to a large company and Sunward’s proactive spirit of innovation.



- 2000

Rock drilling robots accepted for tunnels under a “863”major project
- 2002

Approved with the self-managed import and export right
- 2004

Listed in the Most Competitive 100 Hi-tech Enterprises in China
- 2007

Listed in the Most Potential SMEs by Forbes in China
Won the International Design Excellence Awards - Gold Award for the loader-excavator
- 2009

Inspected by Li Keqiang, then Vice Premier of the State Council
- 2011

The first straight arm aerial work platform SWHT26 rolled off the production line
Mr. He received the title of “A MeritoriousEquipment Entrepreneur of China”
- 2014

Received an honorable title of the highest rank from China Construction Machinery Association
Obtained AAA in enterprise credit rating
- 2016

Acquired AVMAX, a Canadian company, to improve the industrial composition in the general aviation sector
Chairman He Qinghua received the title of Contemporary Inventor
- 2018

Off-road scissor aerial work platform series launched
Listed in 2018 Top 50 Global Construction Machinery Manufacturers
- 2020

Articulated aerial work platform launched
Inspected by President Xi Jinping, also General Secretary of the CPC Central Committee and Chairman of the Central Military Commission, on September 17, 2020
- 2022

It was selected as one of the TOP 10 Users' Brand Attention of China Aerial Working Platform in 2021
SWT28J was on the shortlist of the Year TOP 50 of China Construction Machinery Products in 2022, won the "Jury Award"
It has been selected as one of the TOP 40 Global AWP Manufacturers in 2021
It has been selected as one of the TOP 10 Manufacturers of Aerial Working Machinery in China
Articulating Boom lifts SWA22JE won the CMIC2022 of China Construction Machinery Award
Won New Energy Equipment Star Product Award of Industry Conference and Brand Event Series of National V and Euro V Electric boom lifts launched
- 1999

Establishment of Sunward
- 2001

Started the research and development of small excavators
- 2001

Accredited as a national industrial base of hi-tech research and development results
- 2006

Listed at Shenzhen Stock Exchange
The first telescopic handler SWTH3514 rolled off the production line
- 2008

Approved as a National Study and Work Station for Post-doctors
- 2010

Inspected by Wen Jiabao, then Premier of the State Council
Approved as a National Mobilizing Center of Engineering Machinery
- 2012

Inauguration of the National-level Engineering Practice and Education Center at Sunward
- 2015

Grand opening of a subsidiary in Belgium - Sunward Europe Heavy Industry NV
Acquired Hua'an Foundation Engineering Co., Ltd.
- 2017

Listed in the Top 100 Enterprises of China’s Machinery Industry
Awarded the national title of Intelligent Manufacturing Pilot Demonstration Project
- 2019

Electric scissor aerial work platform series launched
Chairman He Qinghua was invited to record a special program Industry Landmarks of Dialog, a top program of China Central Television, the first joint presence of the four “giants” of the engineering machinery industry in Hunan.
- 2021

Series of Telescopic Boom lifts launched
- 2023

Series electric boom lifts, crawler scissor lifts, all electric scissor lifts, intelligent remote control scissor lifts and Telehandler SWTH3007 launching.

Creating a Global High-end Brand of Aerial Work Equipment

Rough Scissor lifts



Crawler Scissor lifts



Telescopic Boom lifts



Articulating Boom lifts



Electric Scissor lifts



Telehandlers

Main Features

SWTH series telescopic handlers are mechanical, electric and hydraulic integrated multi-functional handling and lifting logistic equipment of a new generation independently developed by Sunward, and their performance parameters have reached the international advanced level. They are an ideal and efficient loading, unloading and handling tool for the modern industry, construction industry and agriculture. The equipment has been widely used at factories, warehouses, terminals, construction sites, farms for cultivation, material yards, etc.



A Powerful Dynamic System

It is powerful, efficient in driving and stable in performance with hydrostatic drive, 4X4 drive, and a top configuration consisting of an imported engine, axle, gearbox, hydraulic elements, etc.

A Suspension System of Good Performance

It has a very good buffering and vibration damping effect when leveling with front axle and floating with rear axle, and the rigid locking function of the rear axle and the frame leveling function of the front axle can greatly improve the off-road performance and the driving comfort.

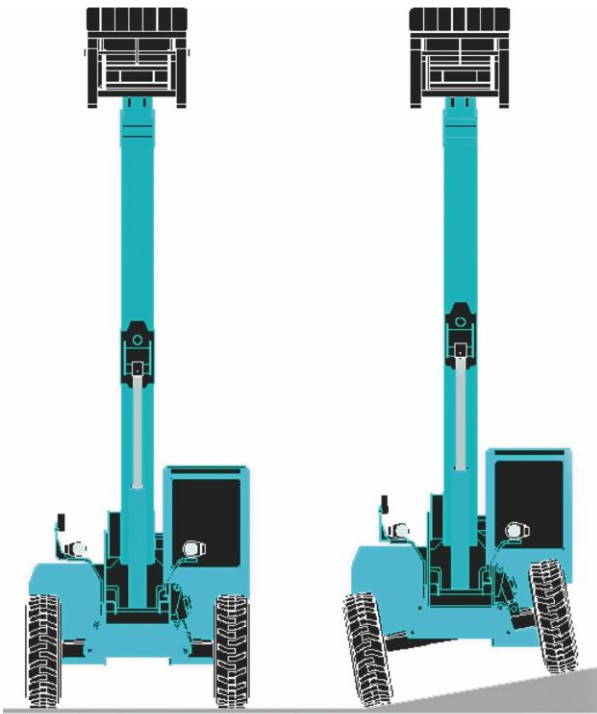
A Light and Flexible Steering System

Three steering modes (front-wheel steering, four-wheel steering, and crab steering) that can be randomly switched are provided to satisfy the requirements of various working conditions; moreover, the power-assisted steering function of the light and flexible hydraulic cylinder also greatly improves the maneuverability and the flexibility.

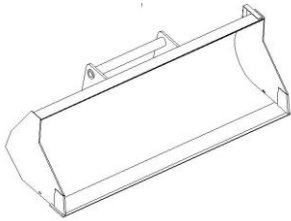
A Precise and Convenient Control System

- 1.The intelligent electrically controlled accelerator is easy to operate.
- 2.The electro-hydraulic proportional control system with pressure compensation and load feedback prevents the working speed from being affected by load variations and keeps the system at a small power loss and good stability. The electric proportional control lever of excellent performance also entails good jogging control and stability of different movements, thus to greatly reduce the operation difficulty level for operators.

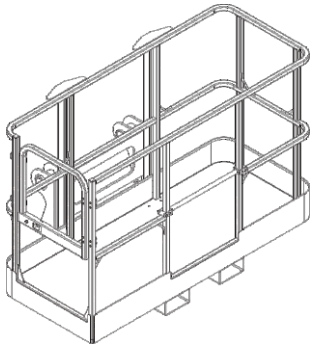
Frame Leveling Function



Optional Attachments



Bucket	
Overall dimensions:(LxWxH, mm)	2300×975×806
Weight:(kg)	372
Bucket capacity(L)	1000
Applicable model:	Products of SWTH series



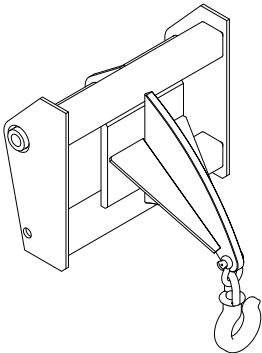
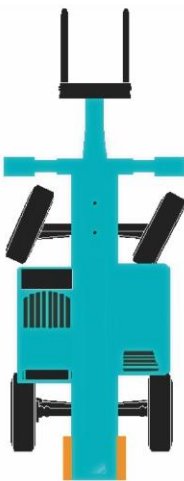
Lifting basket	
Overall dimensions:(LxWxH, mm)	1830×1045×1245
Weight:(kg)	185
Rated loading capacity:(kg)	365
Applicable model:	Products of SWTH series

Three Steering Modes

Front-wheel Steering

Four-wheel Steering

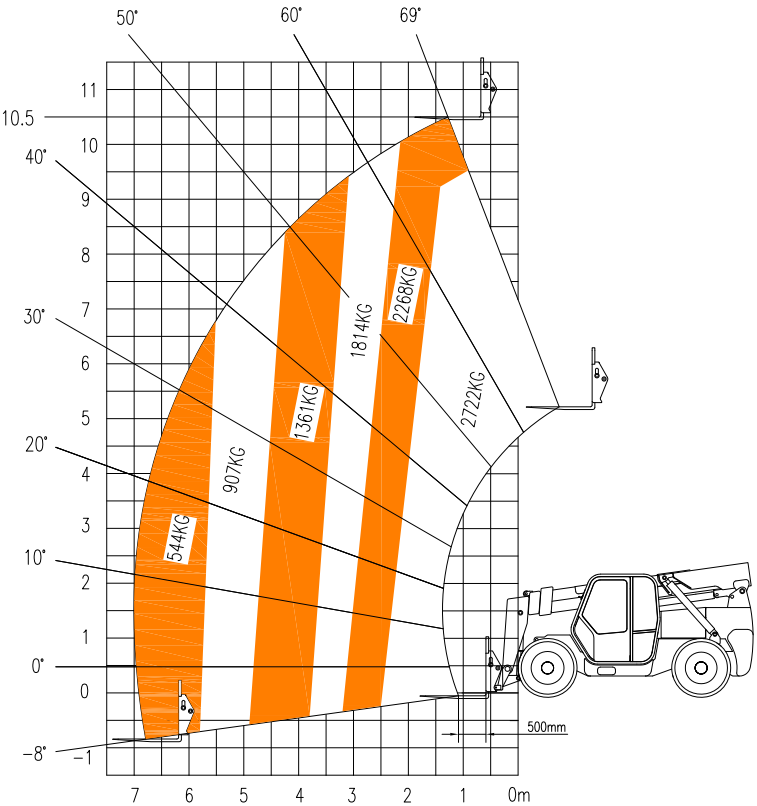
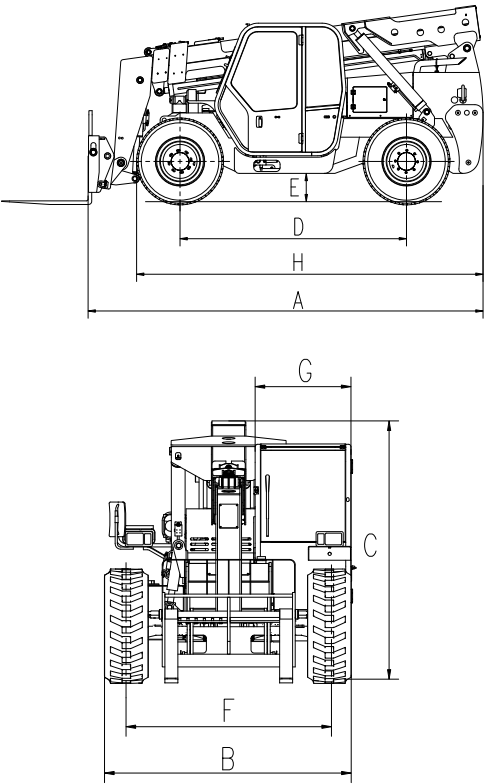
Crab Steering



Lifting hook	
Overall dimensions:(LxWxH, mm)	715×780×640
Weight:(kg)	165
Rated loading capacity:(kg)	3500
Applicable model:	Products of SWTH series



SWTH2710



Performance Parameters			
Basic parameters	Overall dimensions (L×W×H)		mm
	Overall weight (no-load)		kg
	Rated bearing capacity		kg
	Maximum lifting height		m
	Maximum extension length		m
	Loading capacity at maximum extension length		kg
	Frame leveling angle		°
	Ground clearance		mm
	Turning radius (outside)		m
	Traction force		kN
Actuation time	No-load lifting time		s
	No-load descending time		s
	No-load full retraction time		s
	No-load full extension time		s
	Drive mode		Hydraulic driven
Power train	Gear stage (forward/backward)		3/3
	Maximum travel speed		km/h
	Gradeability		%
	Brand		Yuchai
Engine	Model		YC4DK75-T303
	Power		kW
	Maximum torque		N.m
	Oil injection method		Electronic injection
	Cooling method		Water cooling
System capacity	Hydraulic oil		L
	Fuel oil		L
	Engine oil		L
	Cooling Liquid		L
Pallet fork	LxWxT		mm
Tire	Specification		

Dimensions		
A	Length to pallet fork	4900mm
B	Width	2320mm
C	Height	2400mm
D	Wheel base	2800mm
E	Ground clearance	365mm
F	Wheel tread	1930mm
G	Cab width	900mm
H	Length to front wheel	4284mm

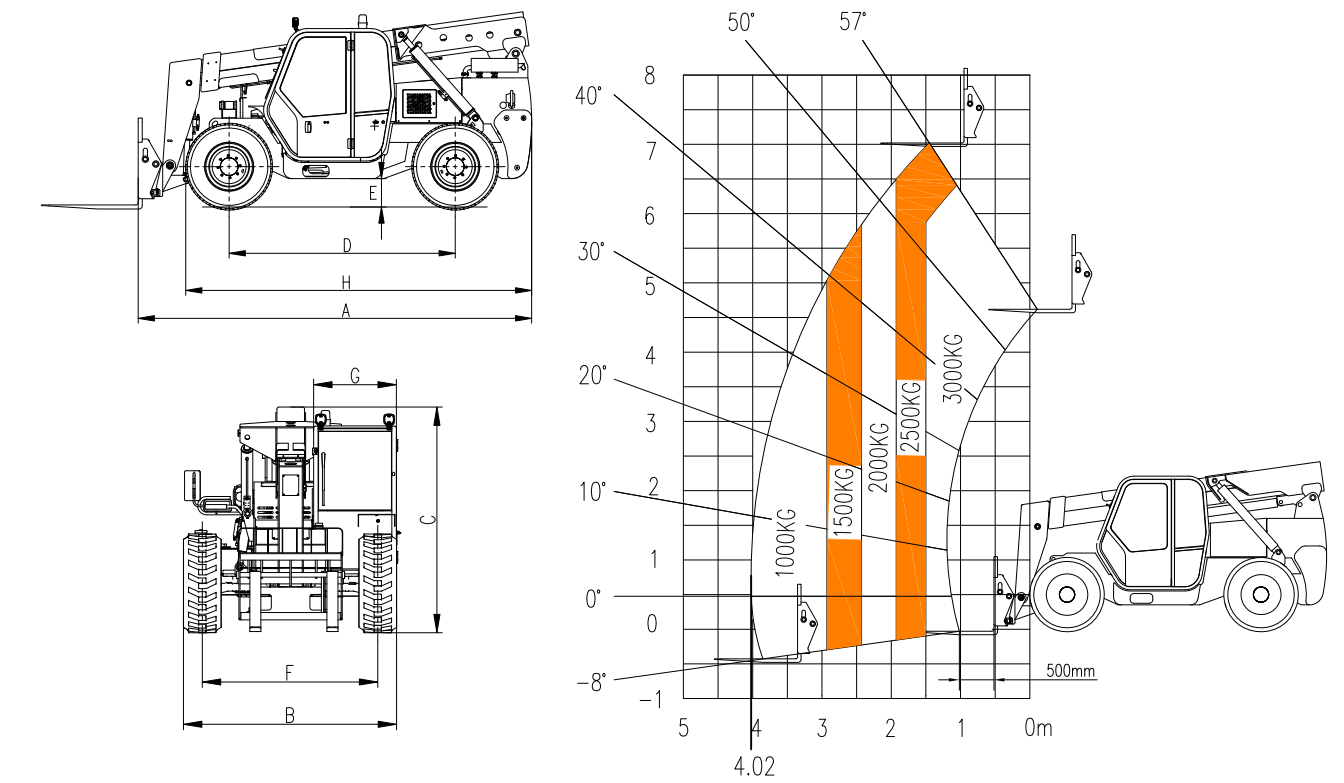
Configuration

Standard Configuration		
Hydraulic pilot	Hydraulic driven	
Four-wheel drive	Three Steering Modes	
3-section boom	Working light	
Horn	Alarm lamp	
Driving light	Floating pallet fork	
Quick-change device	Oil pipe anti-blasting system	
Frame leveling system	Back-off image	
Overload protection	Enclosed cab	
Off-road pneumatic tire with tread pattern	Automatic leveling system of pallet fork	
Cooling/heating air conditioning	Fan	

Optional Configuration		
Pipe grapple	Bucket	
Lifting hook	Lifting basket	
Soft clamp	Solid tire	



SWTH3007



Performance Parameters			
Basic parameters	Overall dimensions (L×W×H)		mm
	Overall weight (no-load)		kg
	Rated bearing capacity		kg
	Maximum lifting height		m
	Maximum extension length		m
	Loading capacity at maximum extension length		kg
	Frame leveling angle		°
	Ground clearance		mm
	Turning radius (outside)		m
	Traction force		kN
	No-load lifting time		s
	No-load descending time		s
	No-load full retraction time		s
Actuation time	No-load full extension time		s
	Drive mode		Hydraulic driven
	Gear stage (forward/backward)		3/3
	Maximum travel speed		km/h
Power train	Gradeability		%
	Brand		Yuchai
Engine	Model		YC4DK75-T303
	Power		kW
	Maximum torque		N.m
	Oil injection method		Electronic injection
	Cooling method		Water cooling
System capacity	Hydraulic oil		L
	Fuel oil		L
	Engine oil		L
	Cooling Liquid		L
Pallet fork	LxWxT		mm
Tire	Specification		

Dimensions		
A	Length to pallet fork	4790mm
B	Width	2320mm
C	Height	2400mm
D	Wheel base	2800mm
E	Ground clearance	365mm
F	Wheel tread	1930mm
G	Cab width	900mm
H	Length to front wheel	4284mm

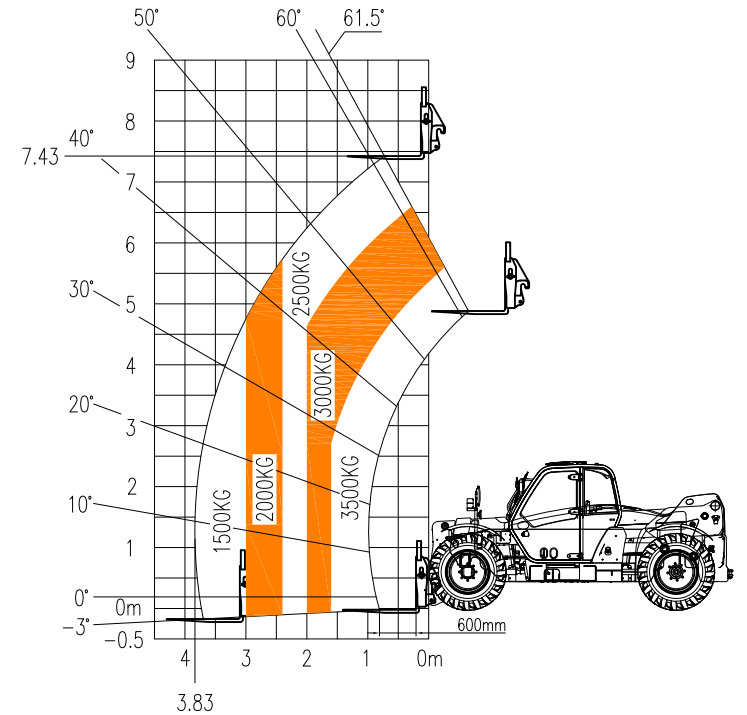
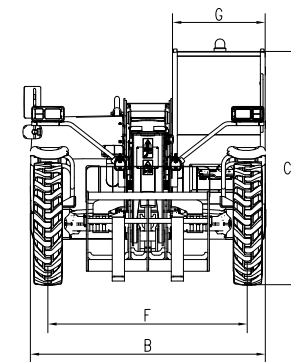
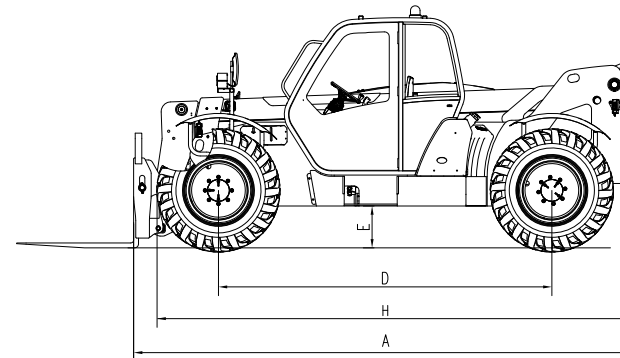
Configuration

Standard Configuration		
Hydraulic pilot	Hydraulic driven	
Four-wheel drive	Three Steering Modes	
2-section boom	Working light	
Horn	Alarm lamp	
Driving light	Floating pallet fork	
Quick-change device	Oil pipe anti-blasting system	
Frame leveling system	Back-off image	
Overload protection	Enclosed cab	
Off-road pneumatic tire with tread pattern	Automatic leveling system of pallet fork	
Cooling/heating air conditioning	Fan	

Optional Configuration		
Pipe grapple	Bucket	
Lifting hook	Lifting basket	
Soft clamp	Solid tire	



SWTH3507



Performance Parameters			
Basic parameters	Overall dimensions (L×W×H)		mm
	Overall weight (no-load)		kg
	Rated bearing capacity		kg
	Maximum lifting height		m
	Maximum extension length		m
	Loading capacity at maximum extension length		kg
	Frame leveling angle		°
	Ground clearance		mm
	Turning radius (outside)		m
	Traction force		kN
Actuation time	No-load lifting time		s
	No-load descending time		s
	No-load full retraction time		s
	No-load full extension time		s
	Drive mode		Hydromechanical drive
Power train	Gear stage (forward/backward)		4/3
	Maximum travel speed		km/h
	Gradeability		%
Engine	Brand		Yuchai
	Model		YC4DK120-T301
	Power		kW
	Maximum torque		N.m
	Oil injection method		Electronic injection
	Cooling method		Water cooling
System capacity	Hydraulic oil		L
	Fuel oil		L
	Engine oil		L
	Cooling Liquid		L
Pallet fork	LxWxT		mm
	Tire Specification		

Dimensions		
A	Length to pallet fork	5092mm
B	Width	2410mm
C	Height	2390mm
D	Wheel base	3420mm
E	Ground clearance	440mm
F	Wheel tread	2050mm
G	Cab width	950mm
H	Length to front wheel	4840mm

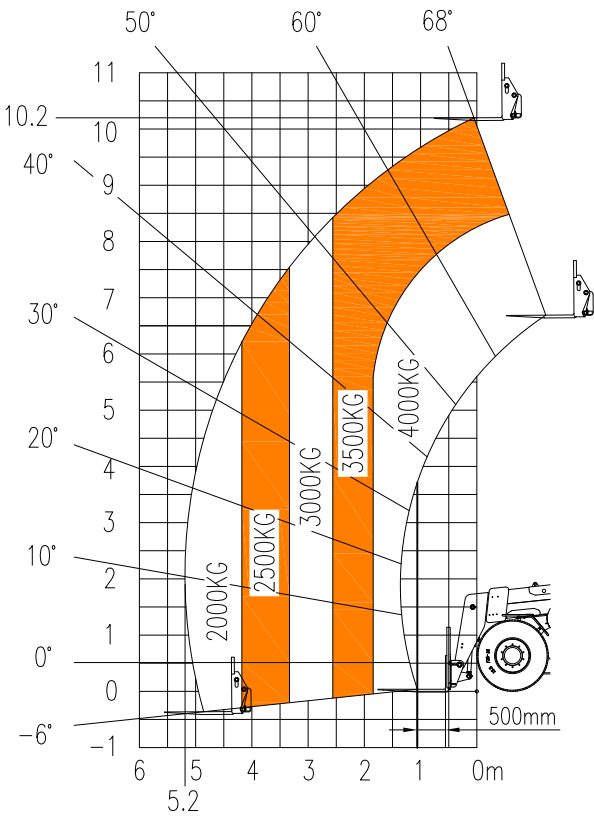
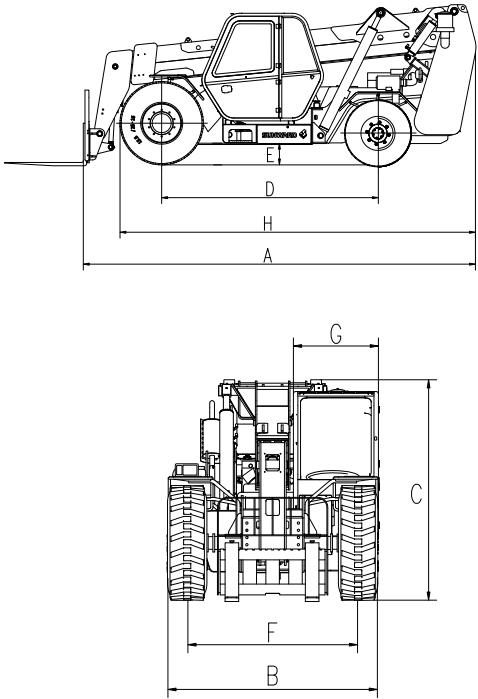
Configuration

Standard Configuration	
2-section boom	Radio
4-wheel drive	HV function
Horn	Work light
Fan	Off-road pneumatic Tire
Electrically controlled handle	Anti-tip protection system
Strobe alarm lamp	LCD instrument
Quick-change device	Automatic leveling system of pallet fork
Bus type cold/hot air conditioner	Oil pipe anti-blasting system
Rear view camera	FOPS/ROPS certified cab
Hydromechanical drive	Reversible fan
Driving lamp	3 steering modes
Floating pallet fork	USB interface

Optional Configuration	
Solid tire	Hydraulic expansion interface
Bale clamp	Bucket
Foam filled tire	Engine preheating device
Silage clamp	Lifting basket
Electrical expansion interface	Roof protective frame
Blue light	Front protective frame



SWTH3910



Performance Parameters			
Basic parameters	Overall dimensions(L×W×H)	mm	7420×2320×2450
	Overall weight (no-load)	kg	11200
	Rated bearing capacity	kg	4000
	Maximum lifting height	m	10.2
	Maximum extension length	m	5.2
	Loading capacity at maximum extension length	kg	2000
	Ground clearance	mm	300
	Turning radius (outside)	m	5.06
	Traction force	kN	40
	No-load lifting time	s	9
Actuation time	No-load descending time	s	10
	No-load full retraction time	s	14
	No-load full extension time	s	12
	Drive mode	Hydraulic driven	
Power train	Gear stage (forward/backward)	2/2	
	Maximum travel speed	km/h	36
	Gradeability	%	30
	Brand	Yuchai	
Engine	Model	YCD4J23T8-100	
	Power	kW	73.6
	Maximum torque	N.m	380
	Oil injection method	Electronic injection	
	Cooling method	Water cooling	
System capacity	Hydraulic oil	L	180
	Fuel oil	L	140
	Engine oil	L	7.5
	Cooling Liquid	L	15
Pallet fork	LxWxT	mm	1220×125×50
Tire	Front wheel specification	15.5-25-16PR	
	Rear wheel specification	9.00-20-11PR	

Dimensions		
A	Length to pallet fork	6200mm
B	Width	2320mm
C	Height	2450mm
D	Wheel base	3300mm
E	Ground clearance	300mm
F	Wheel tread	1875mm
G	Cab width	940mm
H	Length to front wheel	5420mm

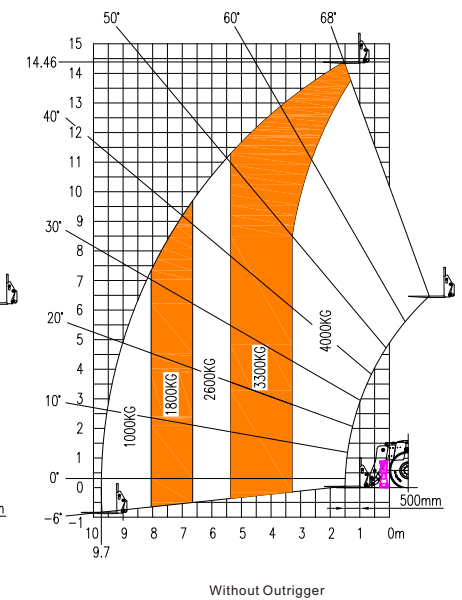
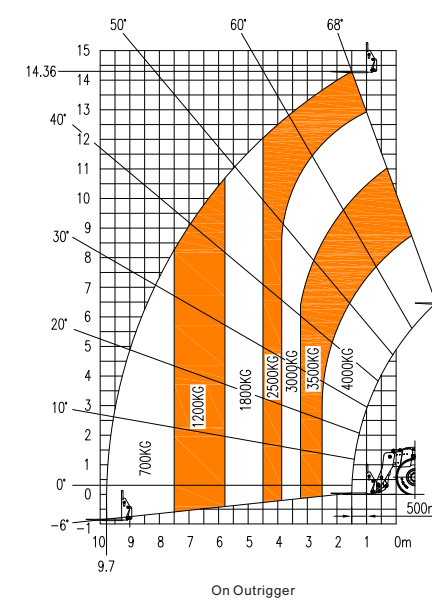
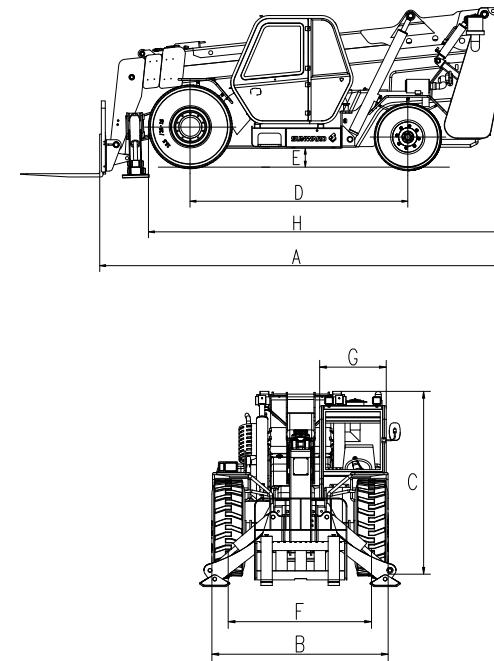
Configuration

Standard Configuration	
Mechanical control	Hydraulic driven
Front-wheel drive	Rear-wheel Steering
2-section boom	Enclosed cab
Fan	Oil pipe anti-blasting system
Horn	Working light
Driving light	Alarm lamp
Quick-change device	Floating pallet fork
Automatic leveling system of pallet fork	Off-road pneumatic tire with tread pattern
Cooling/heating air conditioning	

Optional Configuration	
Pipe grapple	Bucket
Lifting hook	Lifting basket
Soft clamp	Solid tire



SWTH3915



Performance Parameters			
Basic parameters	Overall dimensions(L×W×H)	mm	7570×2320×2450
	Overall weight (no-load)	kg	12800
	Rated bearing capacity	kg	4000
	Maximum lifting height	m	14.46
	Maximum extension length	m	9.7
	Loading capacity at maximum extension length	kg	1000
	Ground clearance	mm	300
	Turning radius (outside)	m	5.06
	Traction force	kN	40
Actuation time	No-load lifting time	s	9
	No-load descending time	s	10
	No-load full retraction time	s	20
	No-load full extension time	s	16
Power train	Drive mode	Hydraulic driven	
	Gear stage (forward/backward)	2/2	
	Maximum travel speed	km/h	36
	Gradeability	%	30
Engine	Brand	Yuchai	
	Model	YCD4J23T8-100	
	Power	kW	73.6
	Maximum torque	N.m	380
	Oil injection method	Electronic injection	
	Cooling method	Water cooling	
System capacity	Hydraulic oil	L	180
	Fuel oil	L	140
	Engine oil	L	12
	Cooling Liquid	L	15
Pallet fork	L×W×T	mm	1220×125×50
Tire	Front wheel specification	15.5-25-16PR	
	Rear wheel specification	9.00-20-11PR	

Dimensions		
A	Length to pallet fork	6350mm
B	Width	2320mm
C	Height	2450mm
D	Wheel base	3300mm
E	Ground clearance	300mm
F	Wheel tread	1875mm
G	Cab width	940mm
H	Length to front wheel	5420mm

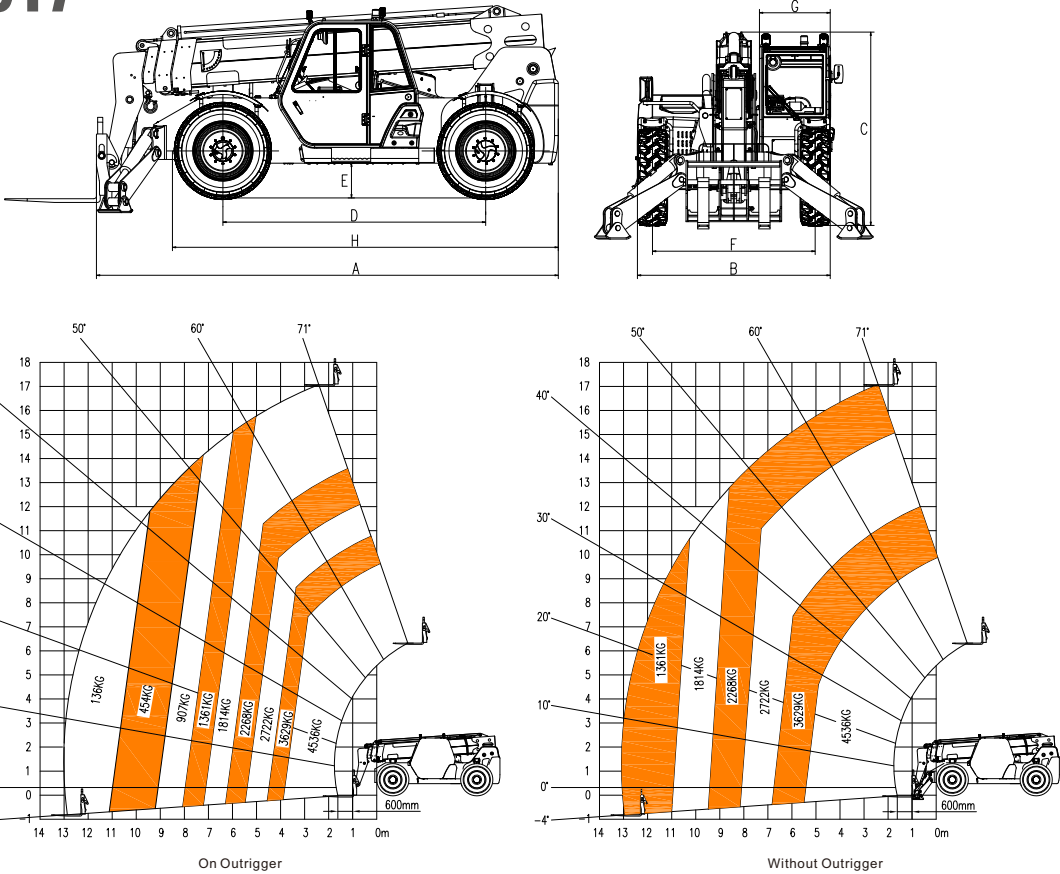
Configuration

Standard Configuration	
Mechanical control	Hydraulic driven
Front-wheel drive	Rear-wheel Steering
3-section boom	Enclosed cab
Fan	Oil pipe anti-blasting system
Horn	Working light
Driving light	Alarm lamp
Quick-change device	Floating pallet fork
Automatic leveling system of pallet fork	Off-road pneumatic tire with tread pattern
Cooling/heating air conditioning	

Optional Configuration	
Pipe grapple	Bucket
Lifting hook	Lifting basket
Soft clamp	Solid tire



SWTH4517



Performance Parameters			
Basic parameters	Overall dimensions (L×W×H)		mm 7340×2560×2540
	Overall weight (no-load)	kg	15100
	Rated bearing capacity	kg	4536
	Maximum lifting height	m	17.06
	Maximum extension length	m	13
	Loading capacity at maximum extension length	kg	1361
	Frame leveling angle	°	10
	Ground clearance	mm	457
	Turning radius (outside)	m	4.3
	Traction force	kN	95
Actuation time	No-load lifting time	s	17
	No-load descending time	s	14
	No-load full retraction time	s	17
	No-load full extension time	s	19
Power train	Drive mode		Hydraulic driven
	Gear stage (forward/backward)		4/3
	Maximum travel speed	km/h	32
	Gradeability	%	55
Engine	Brand		Cummins
	Model		QSF3.8L
	Power	kW	97
	Maximum torque	N.m	488
	Oil injection method		Electronic injection
	Cooling method		Water cooling
System capacity	Hydraulic oil	L	170
	Fuel oil	L	155
	Engine oil	L	12
	Cooling Liquid	L	12
Pallet fork	L×W×T	mm	1200×120×60
Tire	Off-road Pneumatic Tire		14.00-24

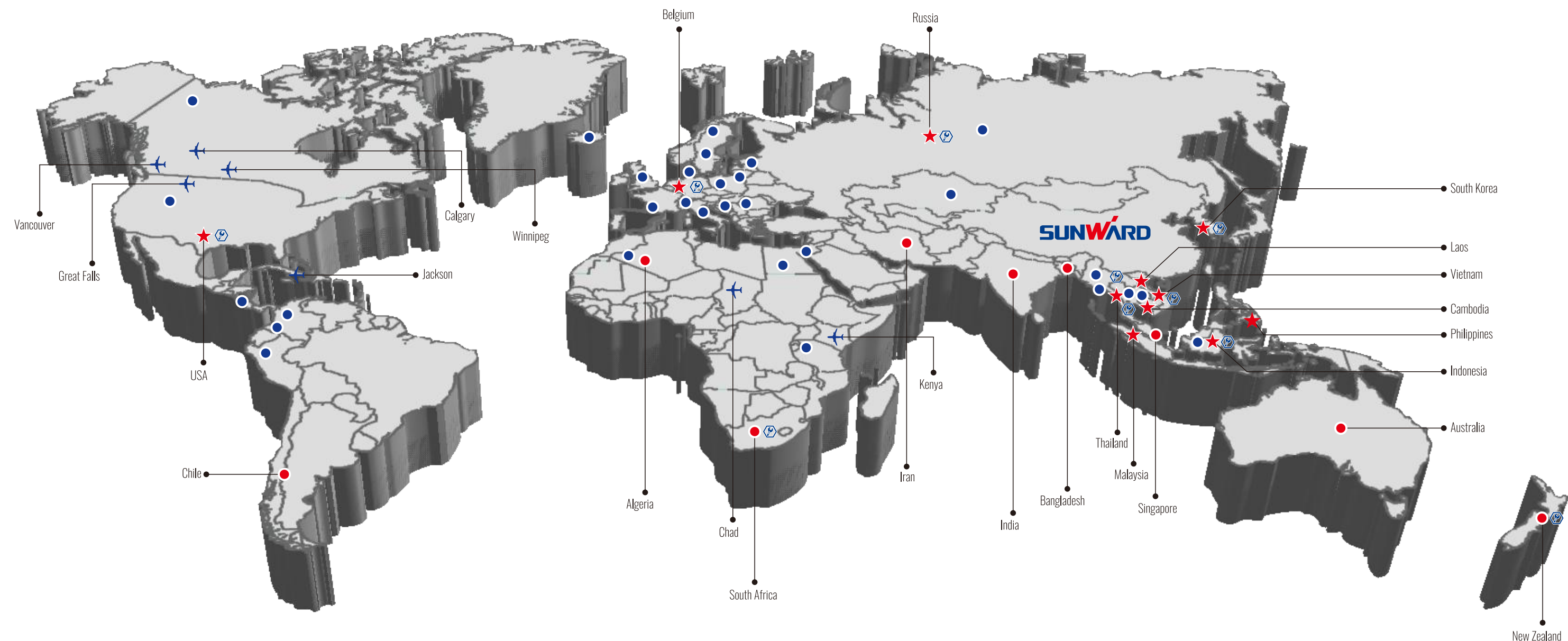
Dimensions		
A	Length to pallet fork	6120mm
B	Width	2560mm
C	Height	2540mm
D	Wheel base	3490mm
E	Ground clearance	457mm
F	Wheel tread	2160mm
G	Cab width	940mm
H	Length to front wheel	5120mm

Configuration

Standard Configuration	
Electrically controlled handle	Hydraulic driven
Four-wheel drive	Three Steering Modes
Back-off image	Fan
Alarm lamp	Driving light
Frame leveling system	Quick-change device
Overload protection	Working Light
Enclosed cab	Cooling/heating air conditioning
Fender	Oil Pipe anti-blasting System
4-section Boom	Floating Pallet Fork
Automatic leveling system of pallet fork	Off-road Pneumatic Tire with tread pattern
Horn	

Optional Configuration	
Lifting basket	Solid tire
Pipe grapple	Bucket
Soft clamp	Lifting hook

Distribution Network



- ★ Sunward subsidiaries
- Sunward offices
- Sunward dealers
- ⚙ Sunward spare parts centers
- ✈ AVMAX service outlets

Sunward obtained the import and export rights in 2001, and have exported products to more than 100 countries and regions in the world. Our professional agencies are distributed all over the world, and we have established a dozen of subsidiaries in countries such as Belgium, the USA, Russia, Cambodia, Laos, South Africa, Malaysia, the Philippines, Vietnam, Indonesia, Thailand, South Korea, etc., which have respectively set up their professional sales service team including local employees and established their core accessory warehouse, complete-machine warehouse and maintenance facilities.

